



Getting Started with WhatsUp Gold MSP Edition

IPSWITCH

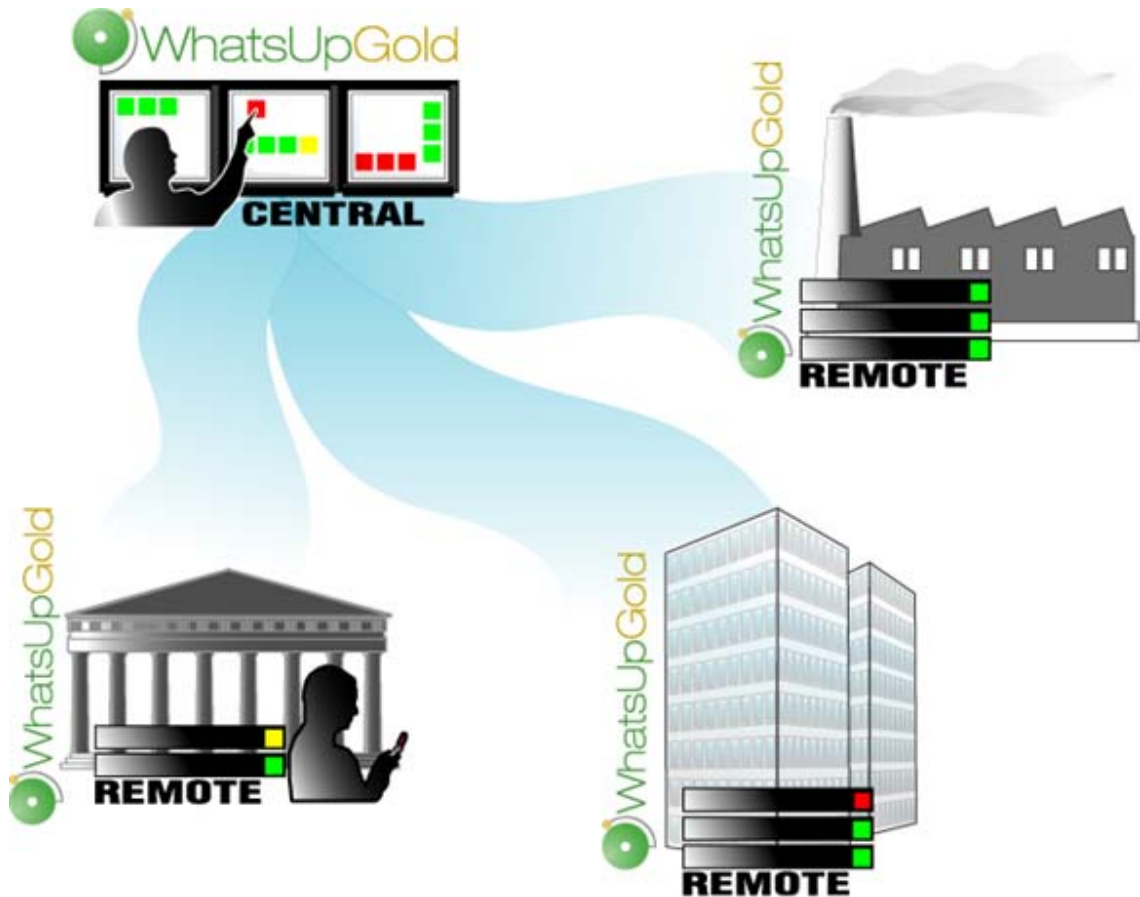
# Getting Started with MSP Edition

## In This Guide

- About WhatsUp Gold MSP Edition ..... 1
- User interfaces ..... 2
- About the MSP Edition reporting capabilities..... 3
- Installing the MSP Edition Central and Remote Sites ..... 3
- Find out more ..... 5
- Copyright notice ..... 6

## About WhatsUp Gold MSP Edition

WhatsUp Gold MSP Edition extends the capabilities of WhatsUp Gold to multiple remote networks. The distributed solution includes a WhatsUp Gold Central installation and a WhatsUp Gold Remote installation; the WhatsUp Gold Central Site installation coordinates data feeds from multiple Remote Site installations. The network data collected from the Remote sites can be viewed in reports on the Central Site. Together, the Central and Remote installations provide high visibility to multiple networks from one central location.



The WhatsUp Gold MSP Edition gives managed solution providers the ability to use all of the features of WhatsUp Gold Premium Edition to monitor their customers' remote networks from a central location in the managed solution provider's network operations center. Managing multiple companies' networks at once has never been easier.

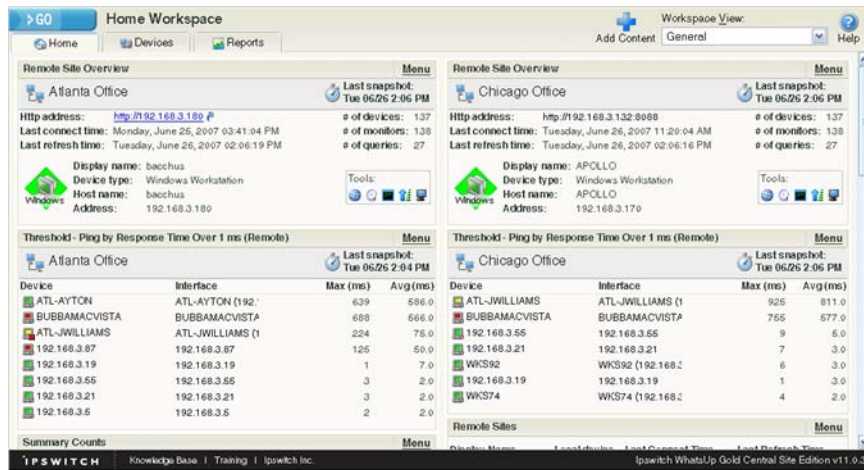
## User interfaces

WhatsUp Gold offers two user interfaces, the Windows console interface and the web interface, which offer similar functionality. We recommend that you do the initial set up—discovery and mapping—on the console, then use the web interface for additional setup of monitors and workspaces, users and permissions, and for day-to-day monitoring.

- **Windows console interface.** The console is a Windows application, through which you can configure and manage WhatsUp Gold and its database.
- **Web interface.** The web interface provides access to WhatsUp Gold functionality (via HTTP or HTTPS) from a web browser.
- **Mobile interface.** You can now conveniently view your network's status from a mobile device at any time through WhatsUp Gold Mobile Access.

## About the MSP Edition reporting capabilities

The WhatsUp Gold MSP Edition lets you set up and view reports associated with each remote network. You set up centralized reports on the Central Site to gather key data from the Remote Sites.



With the monitoring and reporting capabilities you can be confident that the networks are fully monitored and that you will stay informed about the overall network health.

The screenshot shows the 'Remote Site Status' report for March 10, 2008. It contains a summary table with the following data:

Remote Site	Devices Up	Devices Down	Devices in Maintenance	Monitors Up	Monitors Down	Last Snapshot
Atlanta Office	115	8	0	370	26	Mon 03/10 10:00 AM
Chicago Office	62	29	0	62	29	Mon 03/10 9:59 AM

If you lose the connection between the Central and Remote Sites, the information from the last network state is still available on the Central Site. Each Remote Site continues to run an independent, full-featured version of WhatsUp, so it continues to gather network data, regardless of the connection status between the Remote and Central Sites.

All data communicated between the Central and Remote Sites is transferred over Secure Socket Layer (SSL) protocol to ensure that data is secure and confidential. The SSL communications between sites occur seamlessly, with no extra user setup required.

## Installing the MSP Edition Central and Remote Sites

### Installation overview

The Ipswitch WhatsUp Gold MSP Edition is comprised of the:

- **WhatsUp Gold Central Site** component installed on a network computer to collect data from and monitor all of the Remote Sites.

## WhatsUp MSP Edition Getting Started Guide

- **WhatsUp Gold Remote Site** component installed on a network computer at each remote location. Each remote site computer monitors the remote site network and reports the network status back to the Central Site.
- **Ipswitch Dashboard Screen Manager** application automatically installed with the WhatsUp Gold Central Site. After the Central and Remote Sites are set up, you can configure this application to cycle through a series of selected WhatsUp Gold web interface pages and other Web pages that you want to view on a regular basis. The Dashboard is ideal to set up across multiple monitors to view multiple networks or Remote Sites, increasing visibility to the information that is most important to you.

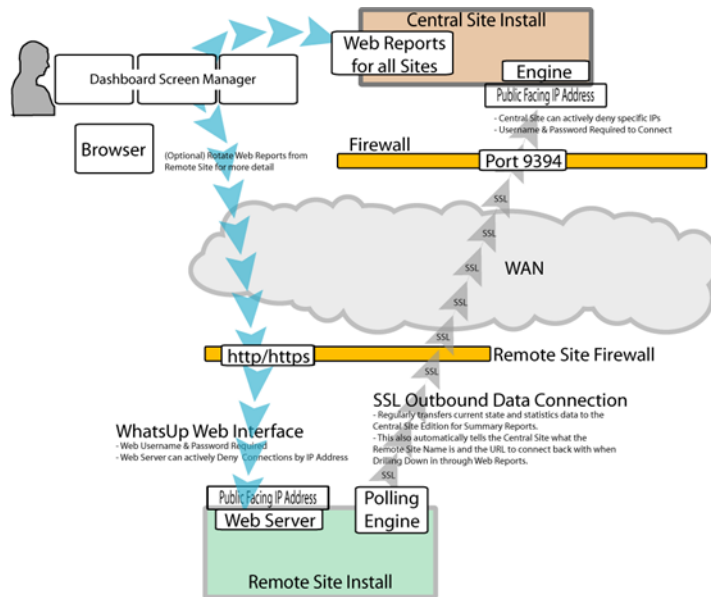
There are two installation programs for the MSP Edition, one for the WhatsUp Gold Central Site and a second for the WhatsUp Gold Remote Site. The installation programs step you through the process of installing each part of the application.

Following are the overview steps required to install the MSP Edition. For more detailed installation instructions, see the Installing the WhatsUp MSP Edition to Central and Remote Sites deployment guide located on the *Ipswitch Web site* (<http://www.WhatsUpGold.com>):

- 1 Install the Central Site application.
  - (Recommended) Select whether to enable the WhatsUp Web server and select the Web server port.
  - Create a User Name and Password that the Remote Sites will use when connecting to the Central Site.
  - Configure the TCP port that the Remote Sites will use to connect to the Central Site.
- 2 Make sure the firewall ports are specified and open for the inbound connections (from the Remote Sites on Port 9394 TCP).
- 3 Install the Remote Site application at the remote locations.
  - Select whether to enable the WhatsUp Web server and select the Web server port.
  - Set up the Central Site IP Address and TCP Port that the Remote Site(s) will use to connect to the Central Site.
  - Set the User Name and Password that the Remote Site(s) will use to gain access to the Central Site.
  - Set up the Display Name for the Remote Site.
  - (Recommended) Enter the HTTP address that the Central Site will use to access this Remote Site's Web interface.

## WhatsUp MSP Edition Getting Started Guide

- Run the network discovery to identify devices on the network and set up Active and Passive Monitors.



- Create Workspace Reports on the Central Site installation for each of the Remote Sites.
- (Optional) Set up the Dashboard application on the Central Site.

After the above steps are complete, the application is ready to monitor, and be further customized and expanded as required. Data will be communicated from the Remote Sites to the Central Site. The network data is rolled-up in the workspace reports and full reports that you set up. If you enabled access to the Remote Sites, you can drill-down from the Central Site reports to detailed historical data on the related Remote Site.

## Find out more

To learn more about the WhatsUp Gold MSP Edition and other WhatsUp products, visit the *WhatsUp Gold Web site* (<http://www.WhatsUpGold.com>).

## **Copyright notice**

©1991-2010 Ipswitch, Inc. All rights reserved.

This document, as well as the software described in it, is furnished under license and may be used or copied only in accordance with the terms of such license. Except as permitted by such license, no part of this publication may be reproduced, photocopied, stored on a retrieval system, or transmitted, in any form or by any means, electronic, mechanical, recording, or otherwise, without the expressed prior written consent of Ipswitch, Inc.

The content of this document is furnished for informational use only, is subject to change without notice, and should not be construed as a commitment by Ipswitch, Inc. While every effort has been made to assure the accuracy of the information contained herein, Ipswitch, Inc. assumes no responsibility for errors or omissions. Ipswitch, Inc., also assumes no liability for damages resulting from the use of the information contained in this document.

IMail, the IMail logo, WhatsUp, the WhatsUp Gold logo, WS\_FTP, the WS\_FTP logos, Ipswitch, and the Ipswitch logo are trademarks of Ipswitch, Inc. Other products and their brands or company names, are or may be trademarks or registered trademarks, and are the property of their respective companies.

This document was published on Tuesday, March 16, 2010 at 11:24.